



# SHORE

Empower students as the agents of change

## Login Procedure for SHORE Community Platform



Funded by the  
European Union

*Views and opinions expressed are however those of the author(s) only and do not necessarily reflect those of the European Union or the European Commission. Neither the European Union nor the granting authority can be held responsible for them*

## Table of Contents

List of figures .....	1
Background about the SHORE Project .....	2
Executive summary .....	2
System Manual Registration.....	2
Voting Page.....	6
Contact Page.....	9

## List of figures

Figure 1 Click the Get Started	3
Figure 2 Login Screen- Manual Registration- Read the Legal Disclaimer and Click the ‘I Agree’ Button	3
Figure 3 Login Screen- Manual Registration- Fill in the Required Information In The Open Window	4
Figure 4 Login Screen- Manual Registration- Fill in the Required Information and Click ‘Create My New Account’	4
Figure 5 Manual Registration- Click on The ‘Continue Button’ To Take You Back To The Home Page	5
Figure 6 Manual Registration- Open the e-Mail Message and Click on The Web Link It Contains	5
Figure 7 Manual Registration-You Will Receive a Registration Confirmation- Click on Continue	6
Figure 8 Voting- Click on Session 3	6
Figure 9 Voting Session will Appear	7
Figure 10 You can access the project details by clicking the "Detail" button	7
Figure 11 Project details	8
Figure 12 You can vote for at least 3 different projects	8
Figure 13 You can vote for a single project only once	9
Figure 14 The Community Platform- Click the Contact Tab	9
Figure 15 The Community Platform- Contact Page- You Can Follow Us on Social Media	10
Figure 16 The Community Platform- Contact Page- You Can Contact Us Via This Form	10



## Background about the SHORE Project

SHORE strives to increase ocean literacy by engaging students and teachers to implement the Mission Ocean's objectives through activities and collaborative projects in schools.

Within this project, the project partners will craft trainings and educational materials in line with the blue curricula for schools located in the Baltic Sea, Black Sea, Mediterranean Sea, Danube River, and Rhine River. Participating schools will secure grants to support the implementation of their blue projects. The most outstanding school project will be awarded "Ocean Ambassador of the Year".

Beyond awarding grants, SHORE serves as a comprehensive resource hub and a bridge between researchers, local stakeholders, and schools in the regional areas.

## Executive summary

This document is a deliverable of the SHORE Project, funded by the European Union's Horizon Europe research and innovation programme under the grant agreement No 101112815.

It serves as a guide to help you navigate and use 'The SHORE Community Platform,' developed within the SHORE project. After each open call period, an online contest will be held on the platform, allowing a global and public competition to select the best school projects. This guide will assist you in tracking school projects while ensuring a fair voting process, providing step-by-step instructions on how to use the application effectively.

## System Manual Registration

To log in to the system, visit <https://shoreedu.com/>. The login screen will appear.

### Creating a New Account:

- The link will take you to the Shore Community Platform homepage. To create a new account, click the **"Get Started"** button in the top right corner.
- On the page that opens, read the "SHORE Platform Legal Disclaimer" and click the "I agree to the SHORE Platform Legal Disclaimer" button at the bottom left to proceed to the New Account page.
- Fill in the required fields:
  - Create an easy to remember user name and password.
  - In the School section, if the user is not a student, he/she should select Education as "Offical" and School Name as "None".
  - Enter the remaining information and click **"Create my new account"**.
- You will see a message indicating that an e-mail has been sent to you.
  - Click the 'Continue' button to return to the home page.
  - Open the email message you received from the platform and click on the link it contains.
- You will be directed to a registration confirmation page on the platform.

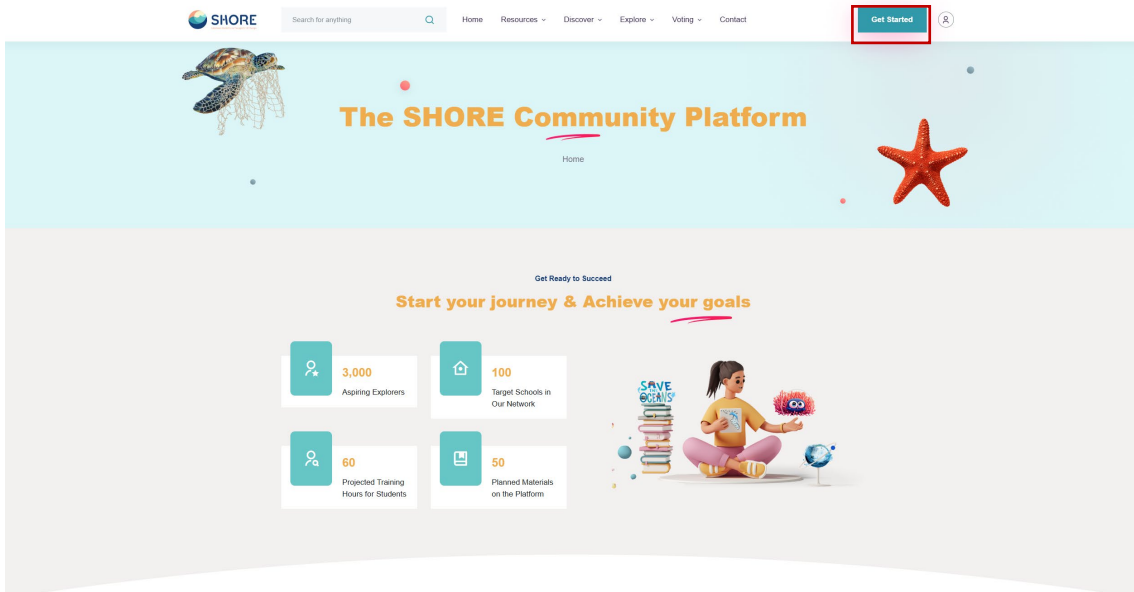


Figure 1 Click the Get Started

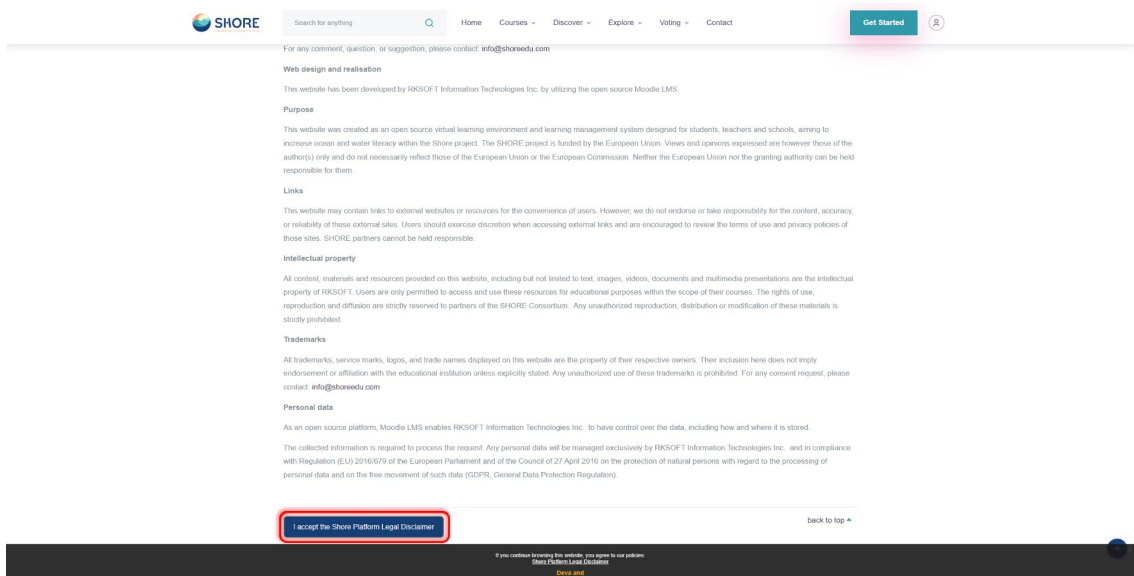


Figure 2 Login Screen- Manual Registration- Read the Legal Disclaimer and Click the 'I Agree' Button

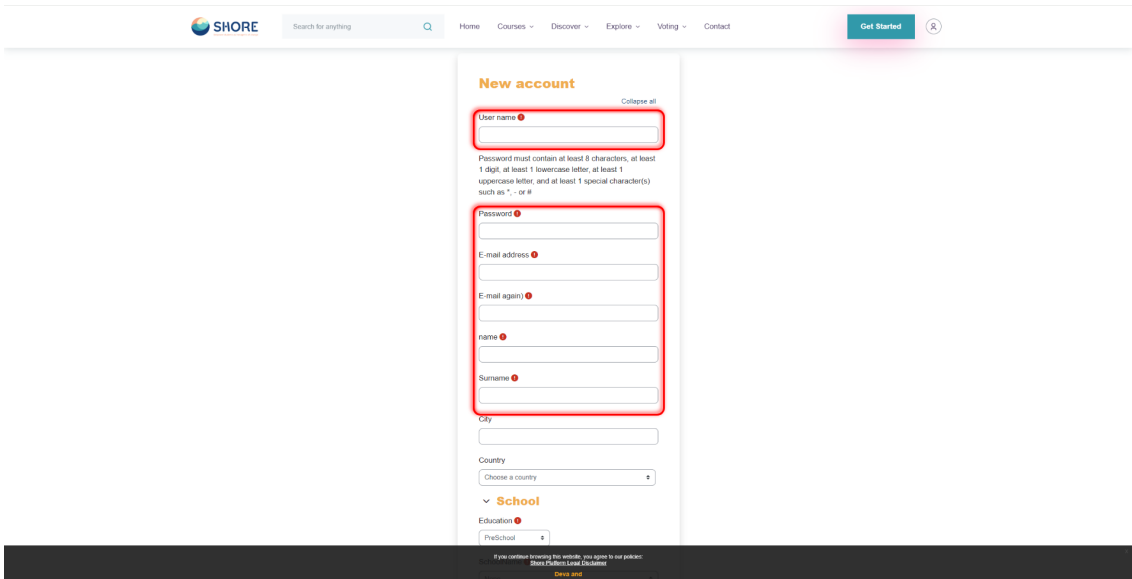


Figure 3 Login Screen- Manual Registration- Fill in the Required Information In The Open Window

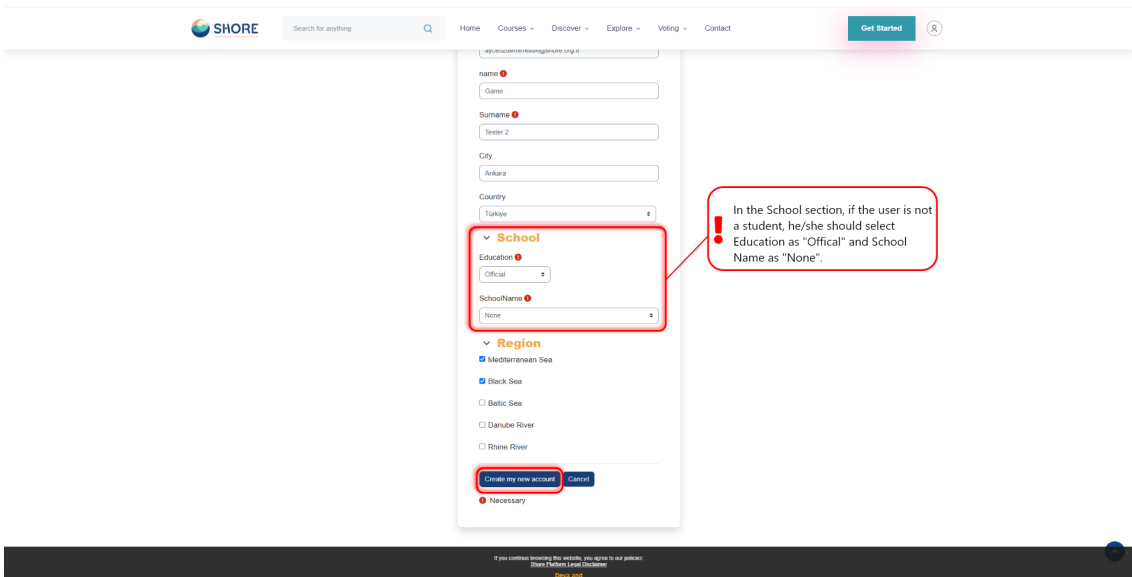


Figure 4 Login Screen- Manual Registration- Fill in the Required Information and Click 'Create My New Account'

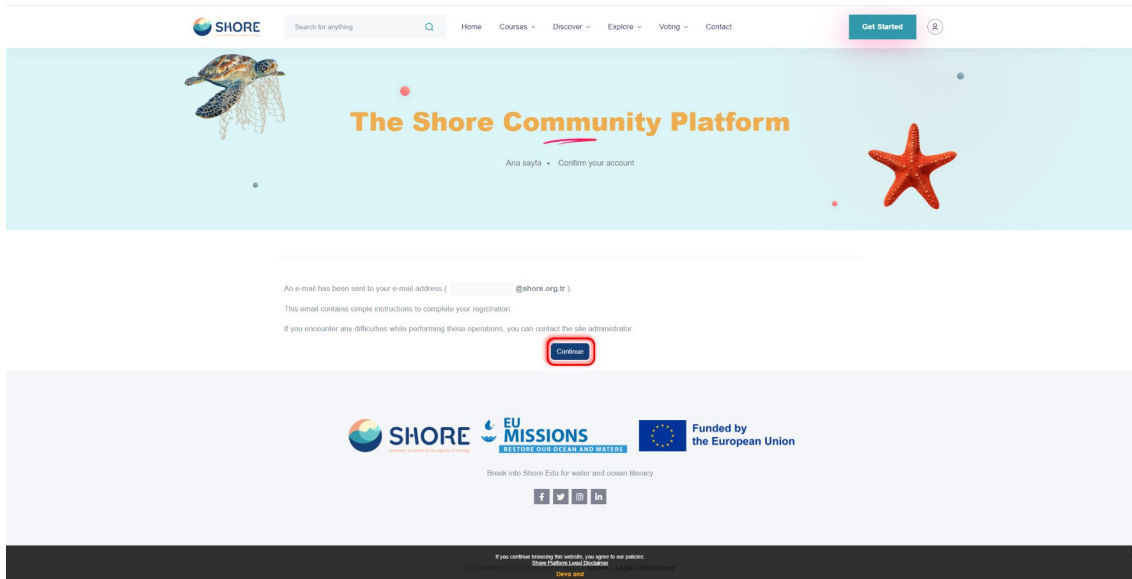


Figure 5 Manual Registration- Click on The 'Continue Button' To Take You Back To The Home Page

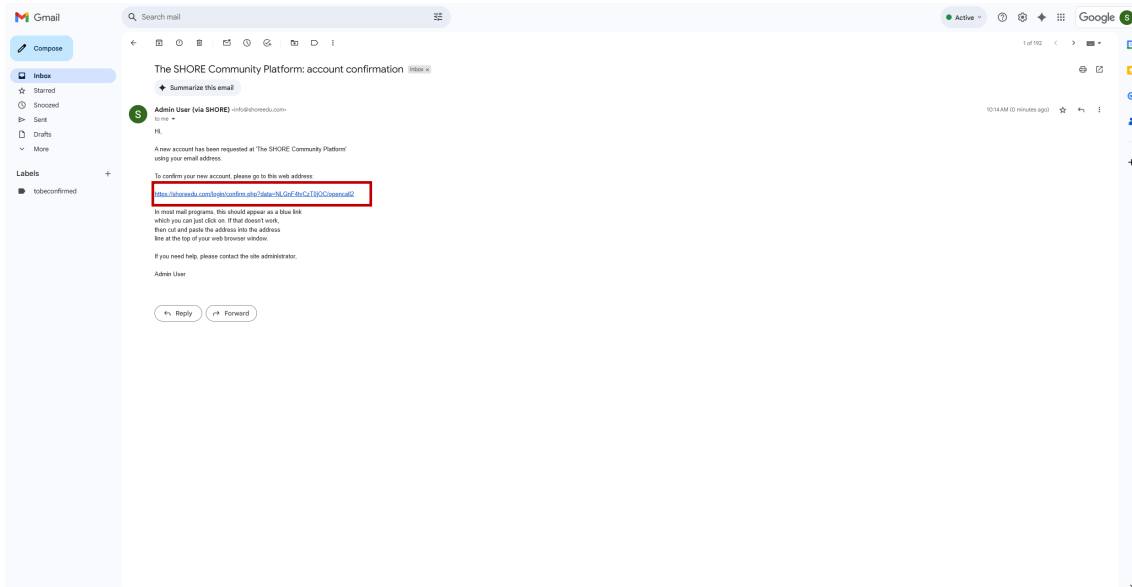


Figure 6 Manual Registration- Open the e-Mail Message and Click on The Web Link It Contains

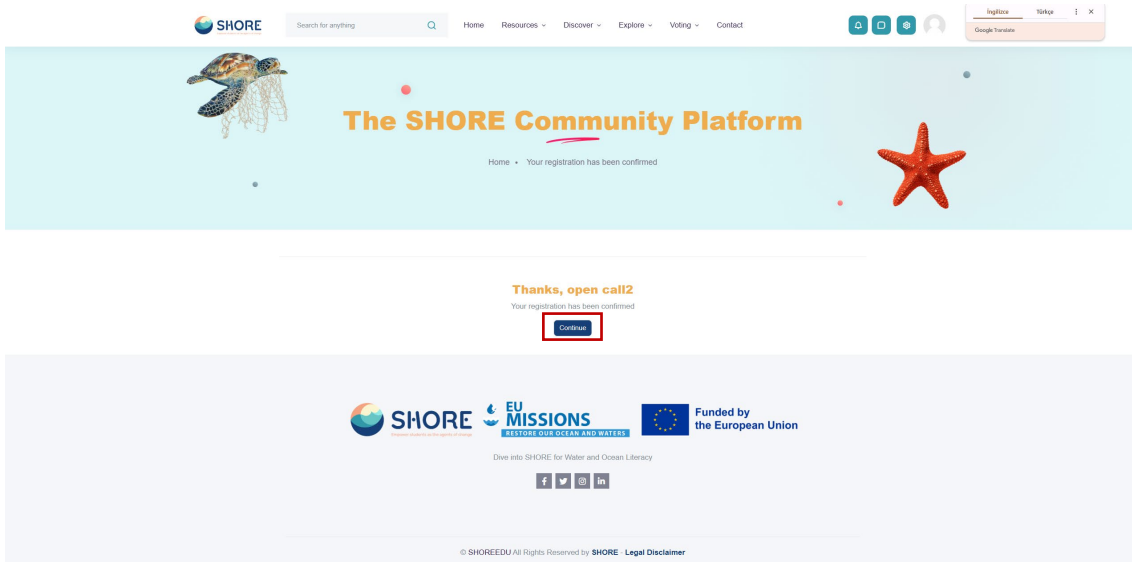


Figure 7 Manual Registration-You Will Receive a Registration Confirmation- Click on Continue

## Voting Page

To log in to the voting, visit <https://shoreedu.com/vote3/>. The voting session will appear.

Alternatively, you can click on "Session 3" in the Voting menu located in the navigation bar.

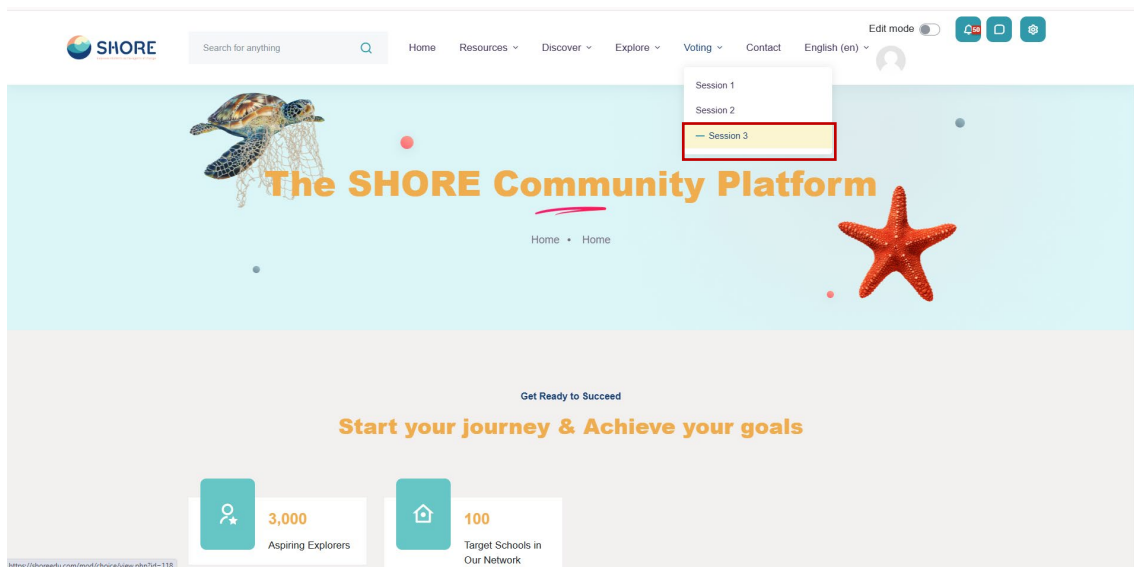


Figure 8 Voting- Click on Session 3

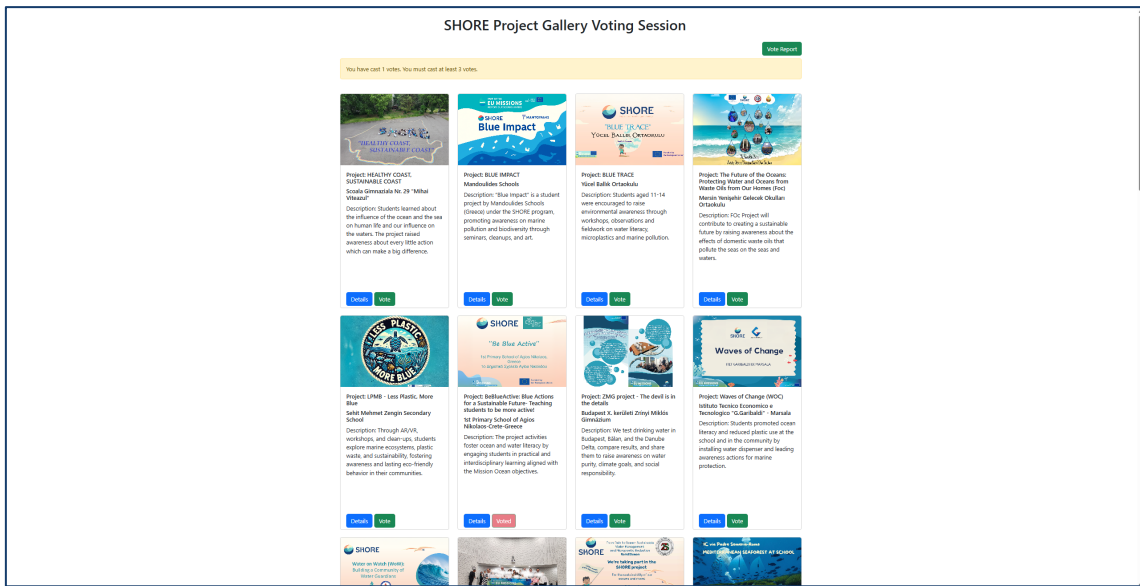


Figure 9 Voting Session will Appear

To view the full project details, simply click on the 'Detail' button. This will provide you with all the necessary information about the project.

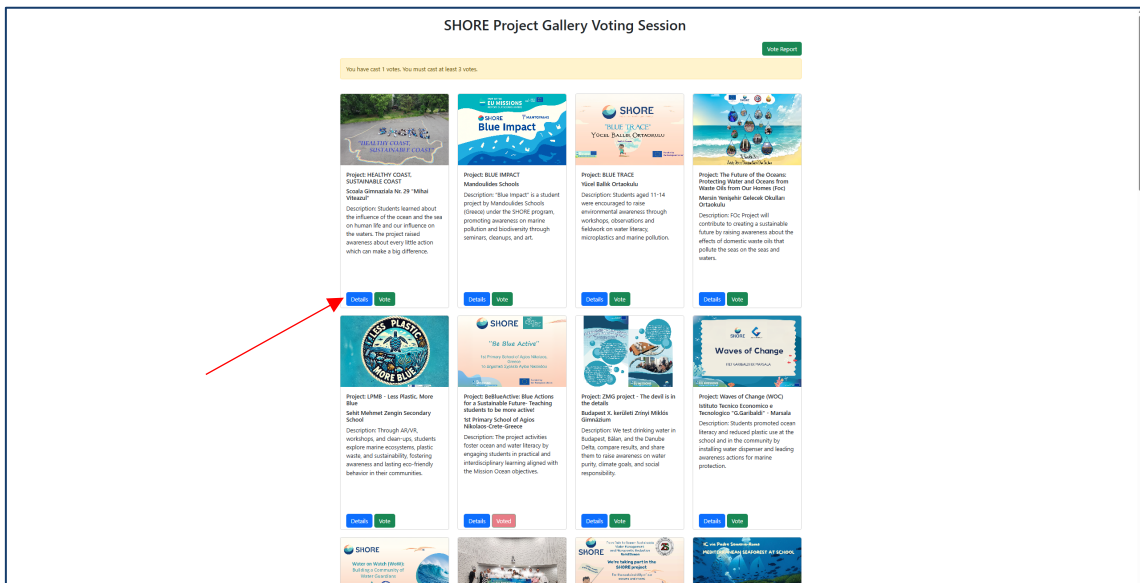


Figure 10 You can access the project details by clicking the "Detail" button



Figure 11 Project details

You have the option to vote for a minimum of three different projects, allowing you to support multiple initiatives that interest you.

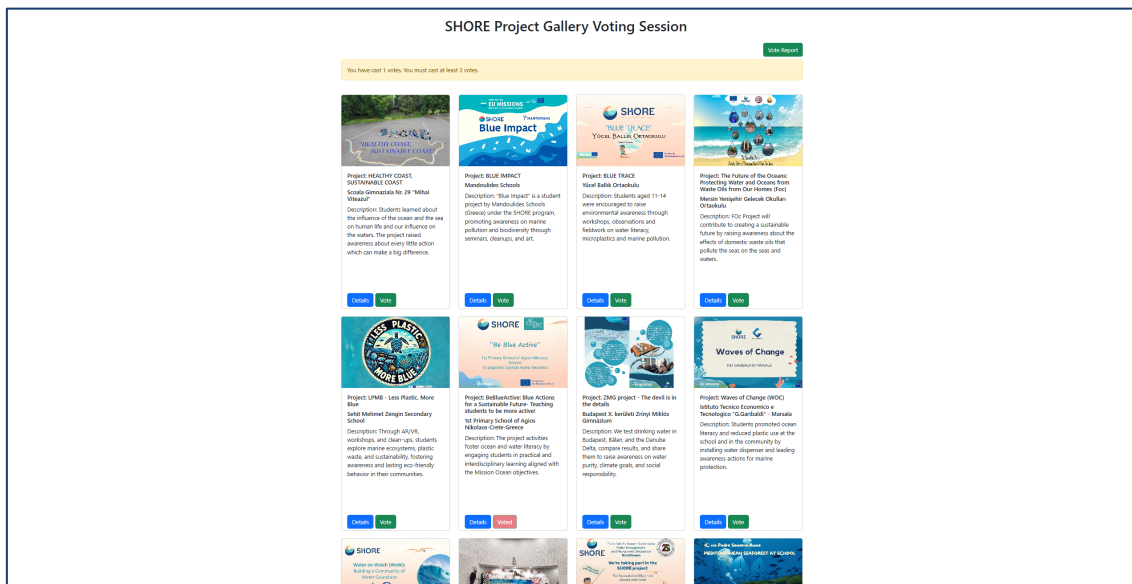


Figure 12 You can vote for at least 3 different projects

You are allowed to vote for each project only once. The system prevents duplicate votes, ensuring that a second vote for the same project is not possible.

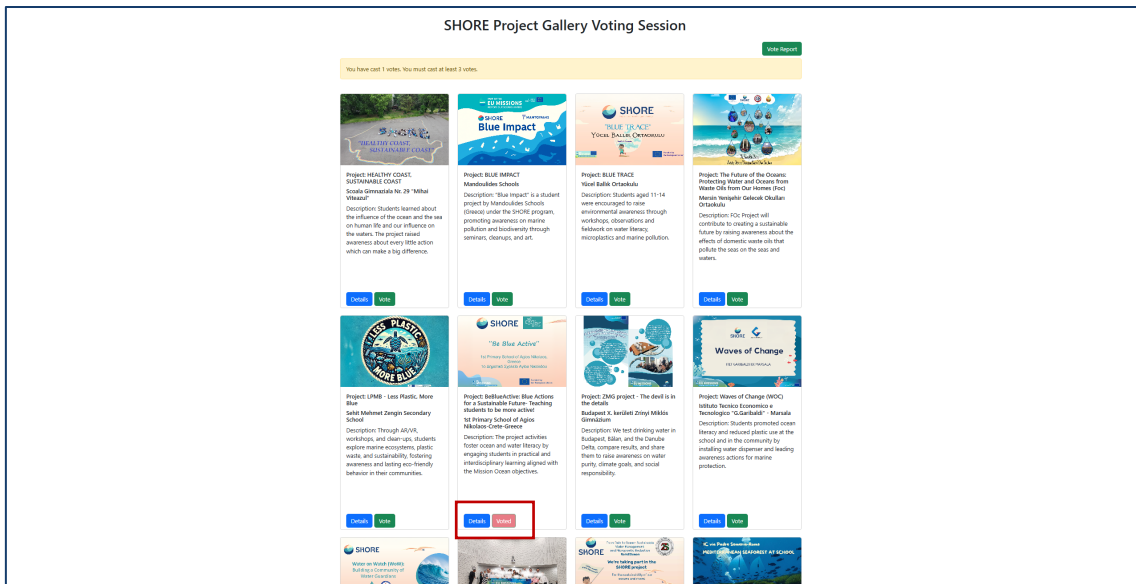


Figure 13 You can vote for a single project only once

## Contact Page

Users can contact the platform administrators and follow social media accounts via forms provided on the Contact Page.

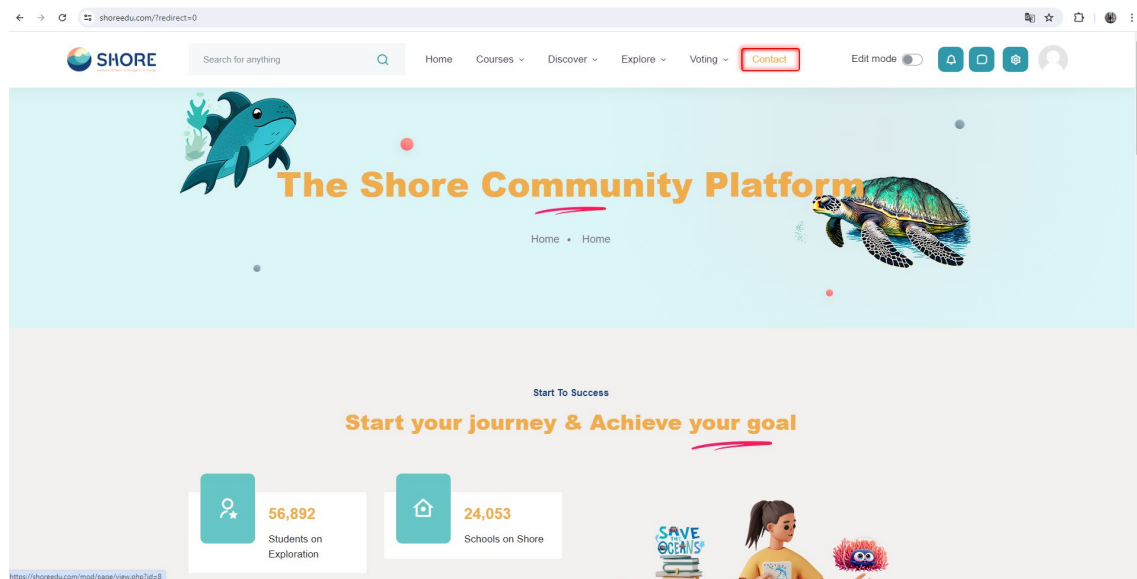


Figure 14 The Community Platform- Click the Contact Tab

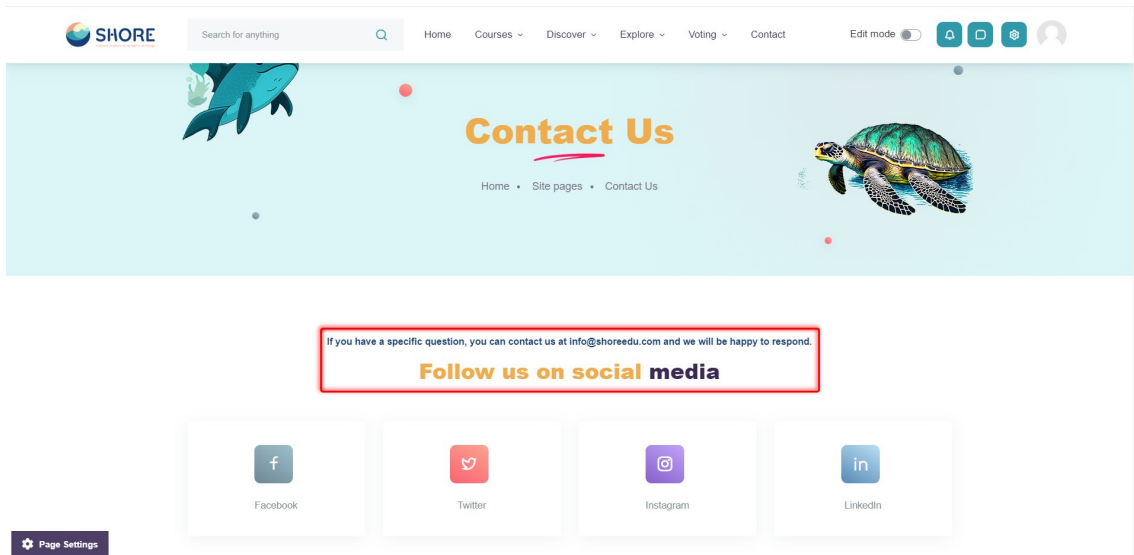


Figure 15 The Community Platform- Contact Page- You Can Follow Us on Social Media

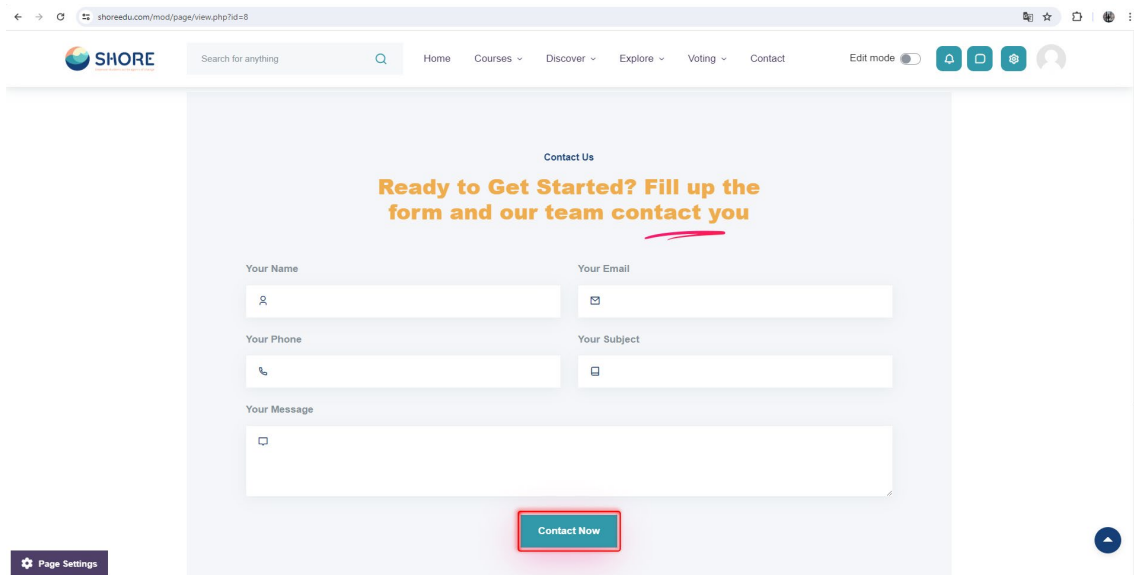


Figure 16 The Community Platform- Contact Page- You Can Contact Us Via This Form